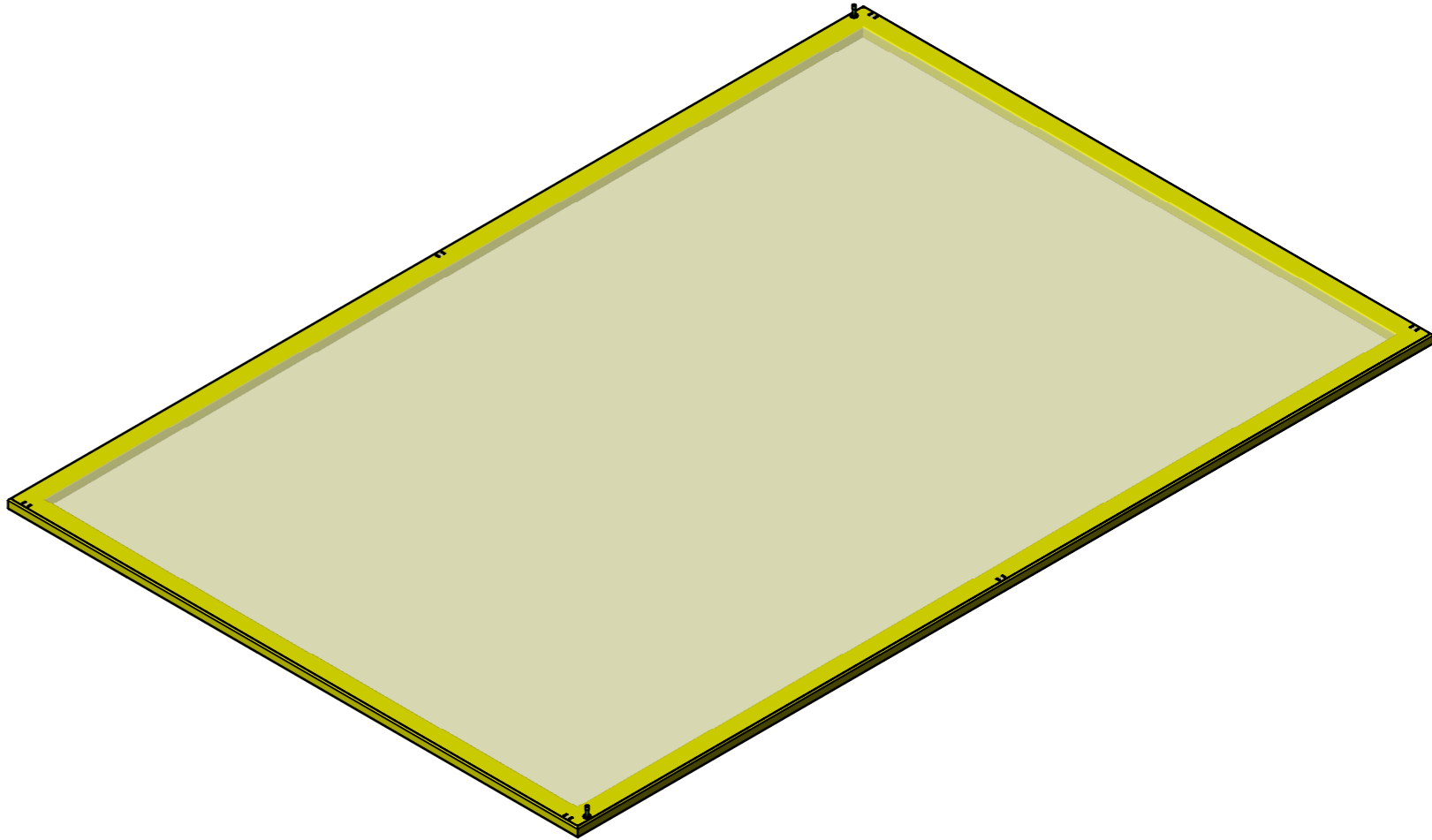
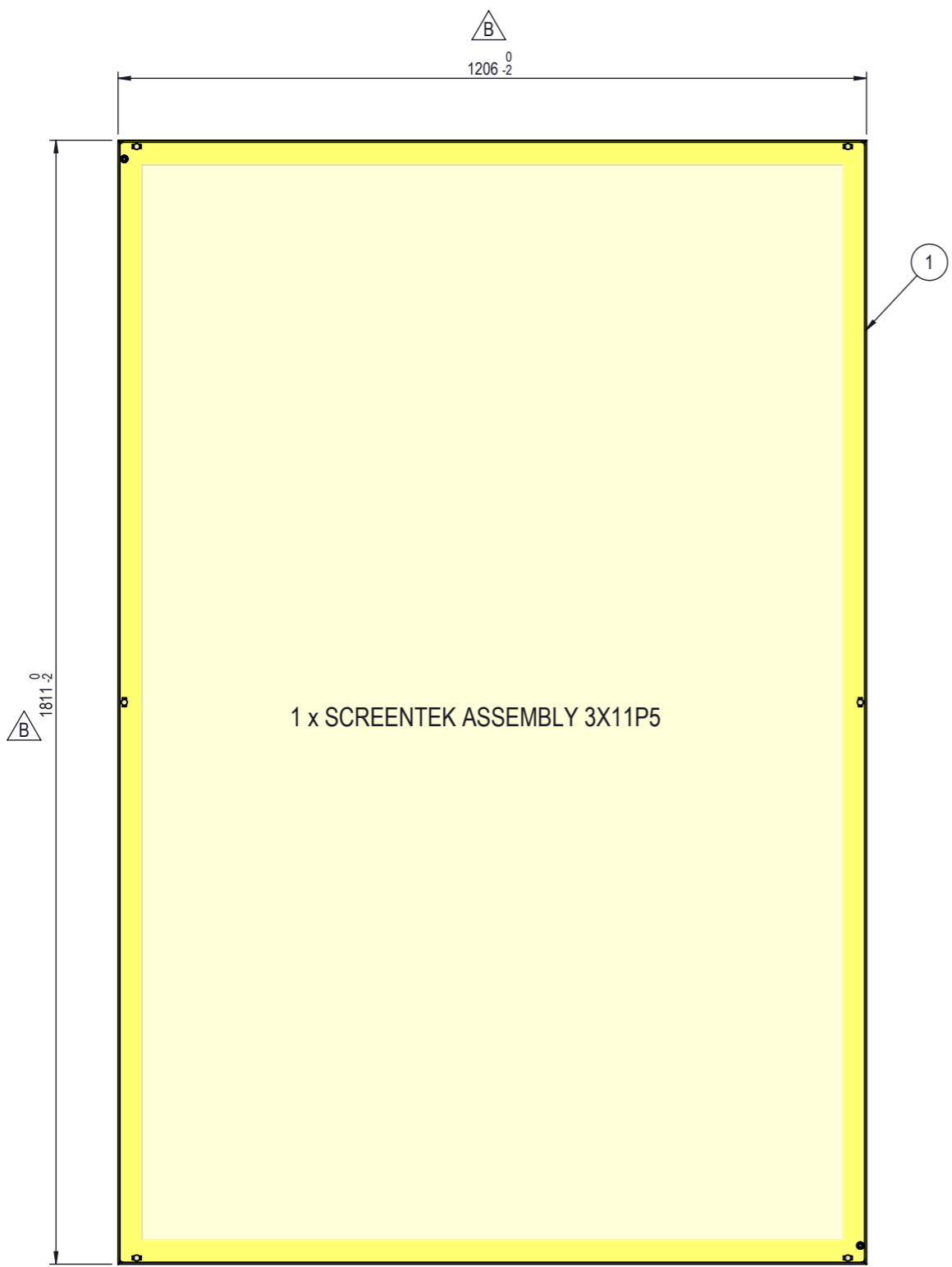


| REVISION | DESCRIPTION                   | DATE      | DESIGN                 | APPROVED               |
|----------|-------------------------------|-----------|------------------------|------------------------|
| B        | DIMENSIONS TOLERANCES CHANGED | 28.3.2018 | MAM <i>[Signature]</i> | VPA <i>[Signature]</i> |

A  
B  
C  
D  
E  
F

A  
B  
C  
D  
E  
F



| ITEM | DRAWING NUMBER | DESCRIPTION               | QTY. | CAMHOSP PAINTED MATERIAL                           | CAMHOSP PAINTED FINISH                | CAMHOSP SS 304L MATERIAL                               | CAMHOSP SS 304L FINISH |
|------|----------------|---------------------------|------|--|---------------------------------------|--|------------------------|
| 1    | 5526-1010-300  | SCREENTEK ASSEMBLY 3X11P5 | 1    | SHEETMETAL - EN10025-2 - S235JR(G2) (1.0038) 1,5mm | Painted RAL 9010 according SPEC025TEC | SHEETMETAL 304L - EN10088 - X2CrNi18-09 (1.4307) 1,5mm | Pickled passivated     |

- Carbon Steel 1.0038 (S235JRG2)  
Powder Coated to Camfil SPEC025TEC
- RAL 9010
- RAL \_\_\_\_\_
  
- Stainless Steel 1.4307 (304L)  
pickled - glass blasted

- Approved
- Approved as noted
- Revise and Resubmit

NAME: \_\_\_\_\_ SIGNATURE: \_\_\_\_\_  
 COMPANY: \_\_\_\_\_ DATE: \_\_\_\_\_



|   |                            |                   |               |
|---|----------------------------|-------------------|---------------|
| DESCRIPTION<br>Finishing Panels Kit - CamHosp 2<br>Screentek Type 1 |                            |                   |               |
| PROJECT<br>-  | LAST REVISION<br>28.3.2018 | WEIGHT<br>7.99 kg |               |
| DRAWING REF.<br>5526-1000-300                                       | SHEET<br>1/1               | SIZE<br>A3        | SCALE<br>1:10 |

NB: The copyright of this drawing remains with Camfil.  
 Contents must not be used, copied or disclosed to  
 third parties without prior written consent.  
 All rights reserved.

1 2 3 4 5 6 7 8